

Washing Color Fastness Tester, to decide color fastness to washing or dry cleaning in all standards. Color fastness to washing is a necessary part of the textile fabrics testing. This washing fastness tester is indispensable to color fastness equipment. But for such an important and constantly used instrument, **how to improve the efficiency of testing to save time and money** has become the big problem, and our **LaboDDD** was born for this.

**Save Time.
Save Trouble.
Save Money!**

LaboDDD (Lab Detergent Dispensing Device) is a tailor-made device for the assistance of adding detergent in the washing colorfastness test.

1. The LaboDDD is designed to be automatic dispensing desired amount of detergent to the test containers according to the testing standards.
2. The device automatic control the water bath temperature and has weighing system for weighing the specimens. According to the weight of the specimen and desired bath ratio, dispensing correct amount of detergent into the container quickly and automatically.
3. LaboDDD also can meet the filling requirements of American standard, add a determined amount of detergent as required automatically.
4. The device has proximity sensor which can detect the existence of the container, whereas it will facilitate the dispensing process from weighing and container positioning and dispensing of detergent. It saves a lot of time for the operator while the dispensing accuracy is also improved a lot.



LaboDDD®
Lab. Detergent Dispensing Device



The test of color fastness to washing of fabrics sometimes should pay attention to the washing conditions, such as the washing temperature should not be too high and the time should not be too long. Manual filling is not only time-consuming and inefficient, but also a waste of money. When you have more Washing Color Fastness Tester being used, it's a huge waste. **What should we do?**

Terrible for manual filling!

LaboDDD®
Lab. Detergent Dispensing Device

Dimensions: 1120(Long) × 660(Wide) × 1390(High)mm without windproof cover

- Sample weigher
- Max. weighing capacity: 100 g
- Weighing accuracy: ± 0.01 g

- 7" Touchscreen control
- Language of use: English / Chinese
- Automatic bath ratio control
- Bath ratio can be set

- Pump accuracy: ±0.5mL for volume accuracy.

1200mL containers (Can exchange)

Tap water tap

550mL containers (Can exchange)
Test container automatic detection with LED indication

Automatic Now!

Soap solution

Bath water

- Bath water temperature automatic control: ±0.5°C
- Bath water temperature can be set
- Low liquid level protection

Stainless steel hanging rack for hanging towels or dishcloth

Max. detergent capacity: 10L

- The whole device is made by stainless steel with bright paint, corrosion protection and easy cleaning

Foot wheel equipped for easy moving





Focus

Design ahead of the curve.

Marketing



Why color fastness to washing is a necessary part?

Jeans and colorful clothes are very important in the fashion market. Now our customers only need to go to www.amazon.com and look. Firstly, if you asked someone what their preferred form of bottoms are, 95 percent of the time the answer would undoubtedly be denim. The global denim jeans market was forecast to worth around 87.4 billion U.S. dollars by 2027, up from 63.5 billion U.S. dollars in 2020, but the disadvantage of denim is its poor color fastness. Then there is the rise of Instagram, young female group have a huge influence on fashion. Of course, young women with colorful clothes has become a part of life in Instagram display. That's why washing color fastness tester an important testing instrument.

Our company noticed this fact early and required our **RF6018** and **RF6028** to designed ahead of the curve so that they are **not only suitable for all major international standards** for low temperature wash colorfastness testing, but also importantly that **if the standards change in the next few years, our instruments may continue to meet the standard requirements**. Of course, some customers will say that the washing fastness tester we want does not need strict to meet the standard requirements, but the fact is that because the put in the market is too important, when the American leading instrument company found our **RF6018** and **RF6028** in 2018, it was shock and immediately hold a meeting to change the instrument. And now we are launching LaboDDD, furthering our commitment to design ahead of the curve.

Since we are aware of the importance washing colour fastness testers, **durability is one of our key points**. When you buy the washing color fastness tester from other mainland manufacturers, you will find that the internal materials made of 304 stainless steel. If you look at our washing color fastness tester, whose **internal materials and container made of 316L stainless steel to increase corrosion resistance**, to make a more durable instrument.

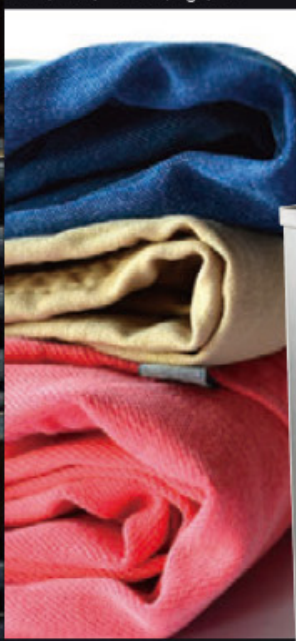
If our customers still have questions, they can take a look at the washing color fastness tester of American Leading Instrument Company and compare it, because our company still **has a huge price advantage**.

- Safety device:
Safety door switch, over-temperature protector, low water level protection
- Automatic water inlet and draining



RF6028E

Dimensions: 610(Long) × 590(Wide) × 1130(High)mm



RF6018E

Dimensions: 1180(Long) × 580(Wide) × 1240(High)mm

Suitable for all major international standards

AATCC 61	AATCC 86	AATCC 132	AATCC 190	GB/T 3921
GB/T 5711	GB/T 12490	ISO 105-C01	ISO 105-C02	ISO 105-C03
ISO 105-C04	ISO 105-C05	ISO 105-C06	ISO 105-C08	ISO 105-C09
ISO 105-C10	ISO 105-D01	ISO 105-E03	ISO 105-E12	FTMS 191
JIS L 0844	M&S C4A	M&S C5	M&S C10A	M&S C11
M&S C26	M&S C37	M&S C49A	M&S P3B	M&S 137
NEXT 2	NEXT 2A	NEXT 3	NEXT 3A	NEXT 5
Woolmark TM 177	Woolmark TM 193	Woolmark TM 199	Woolmark TM 240	Woolmark TM 241



LinkedIn find me.

<https://www.linkedin.com/in/pauking-wu-refond-equipment-64ab2296/>

I have rich experience and many patents for inventions.

Leading the continuous innovation of REFOND's products, I am a forward-looking peer.

REFOND's products are required to be quality first and provide customers with the best pre-sales and after-sales service.

Pauking Wu



Refond product behaves better than others on the market !



REFOND EQUIPMENT co.,LTD.

<https://www.refondtex.com>



Contact Us:

Contact person: Mr. Wu

Tel: 0755-23191332

Mobile: +86 18688967927

Email: paukingwu@refondtex.com

Address: 6-9F Building J, Shifeng Technology Park,
Loucun, Gongming, Guangming New District,
Shenzhen

China Zip Code: 518107



**Welcome to Business Enquiry,
Please Feel Free to Contact Us.**